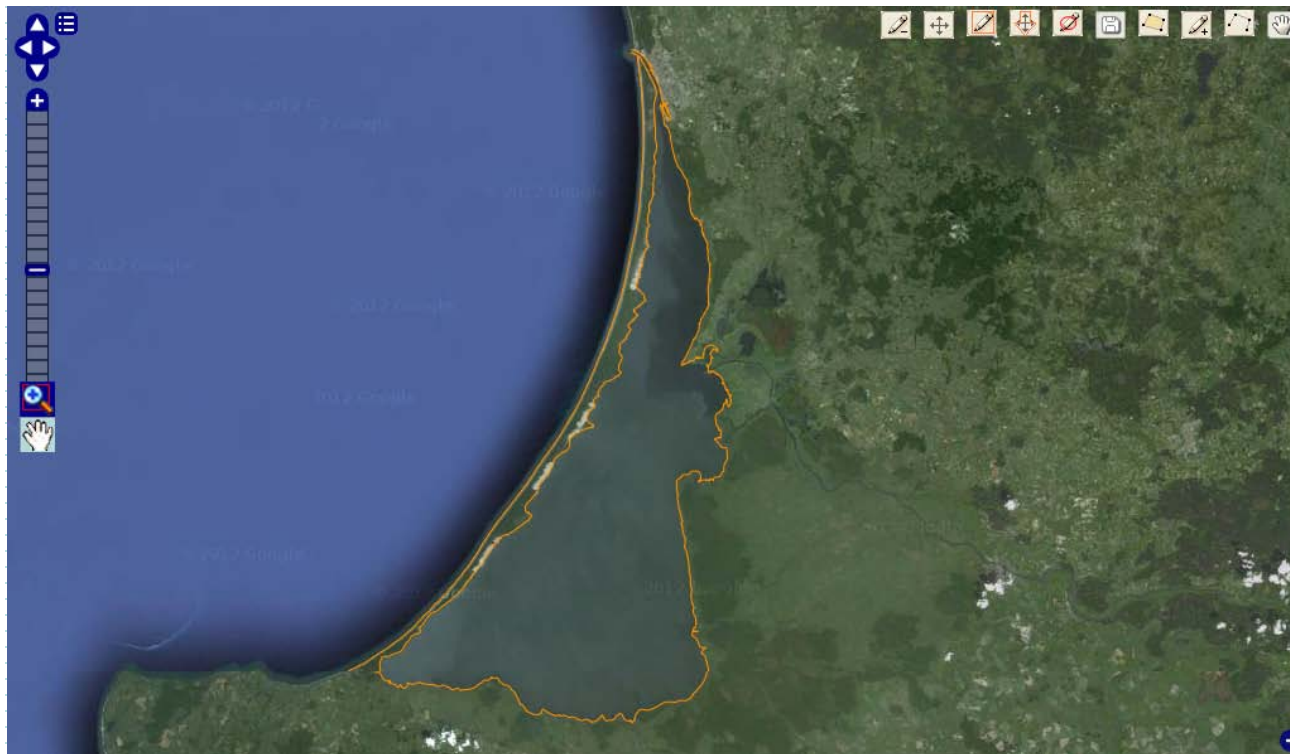




BALTIC LAGOON WEBGIS





Specifications

- Build on Open Source software



- Fully customizable
- Database in versatile formats (EPSG 4326 projection)
- Analysis functions

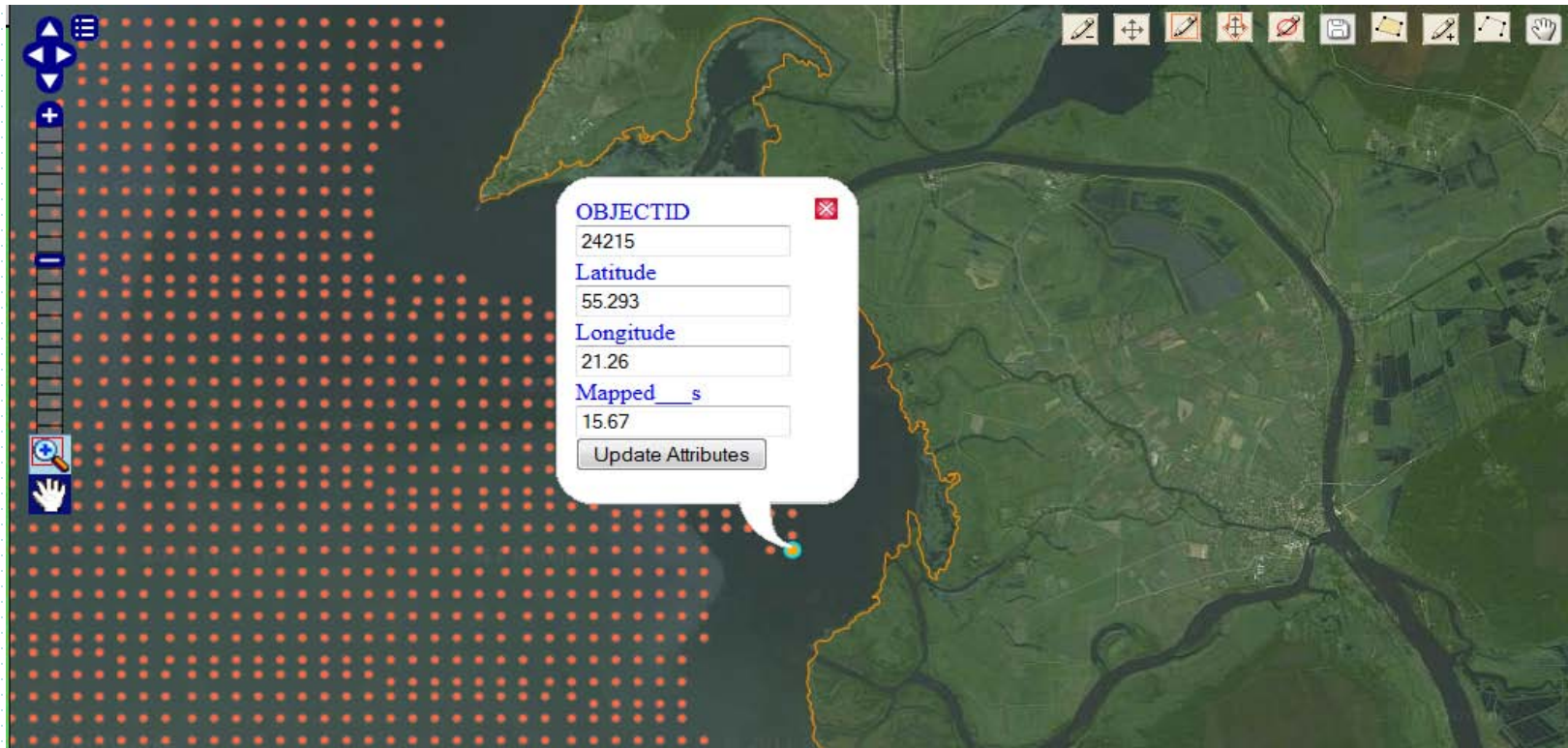


Functionality

Standard viewing functions (zoom, pan, measure distances and areas)

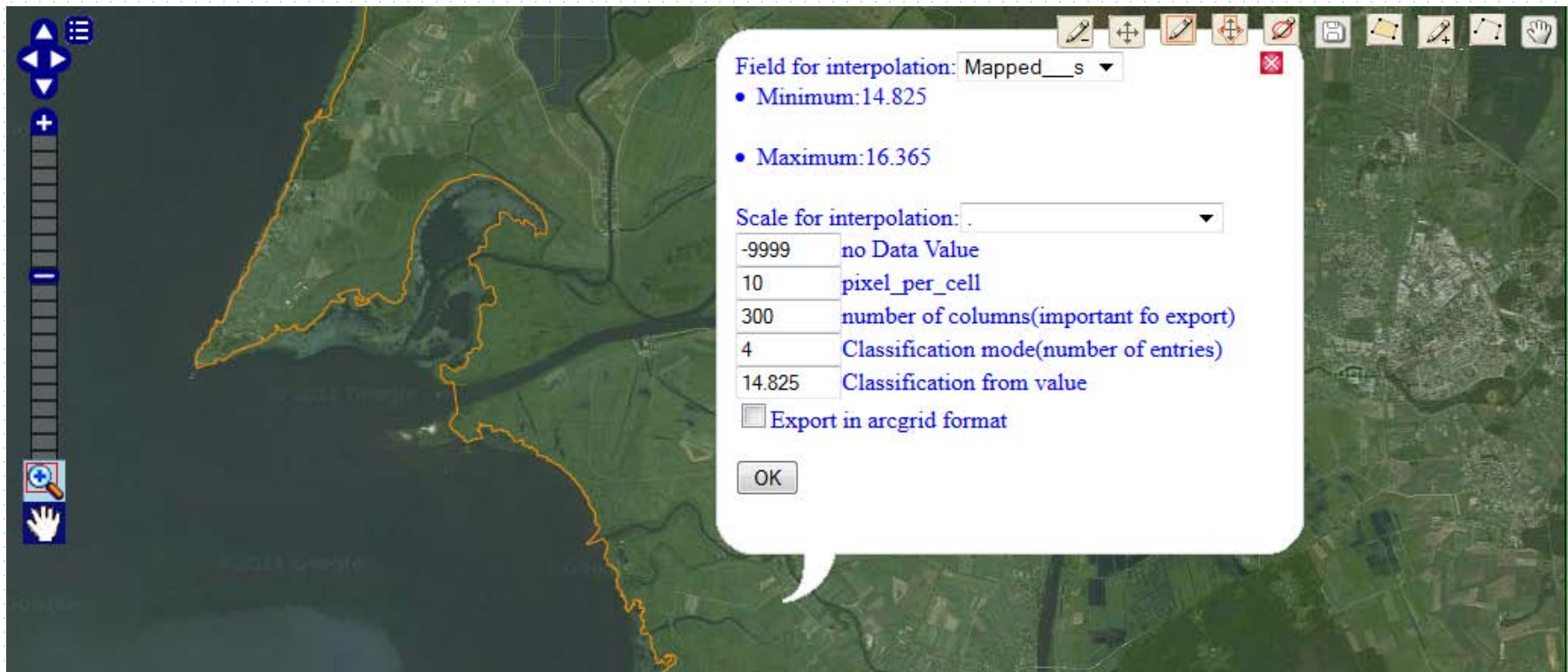


Editing functions (still need account management for saving/editing vector maps)



ARTWEI final meeting MALTA May 20-23, 2013

Analysis functions (interpolation from data points, geostatistics)



Data layers

- Bottom sediments (CL)
- Fishing areas (CL & VL(Russian part))
- Dumping sites (VL)
- Bathymetry (CL & VL)
- Shear stress maps (CL)
- Hydraulic zonation (CL)
- Ports (CL & VL)
- Classified Chl A satellite images (CL)
- Monitoring stations (CL)

More to come as result of contract with AtlantNIIRO
(Kaliningrad)

Sustainability of Baltic lagoon WebGIS

- KU CORPI will maintain and improve database institutionally
- <http://kalote.ku.lt:8080/geoserver/www/webgis.html>
- Direct links from ARTWEI, BALLOON and CORPI pages
-