

## WEBGIS USER GUIDE

Users working with webGIS are able to operate the system without being registered and not logged in, however, in this case the users will not be able to upload their data to the server and apply all the functions of the system.

### Unregistered users are able to:

- deliver their data to the map of GML, CSV files;
- edit the data and export it in GML, CSV, KML;
- use many of the features from the *Geomathematics*, receive the results of *Statistic*, *Calculation of the squares*, *Time Line* functions;
- the user can work with layers that are in the public domain (in the workspace webGIS).

### Registered users

To use all the functions of the webGIS system, the user must log in with a regular user login (username "GISUser"). To do this, click on the "Login" button at the top of the interface, and then click again "Login" in the newly opened window, password is entered automatically (see Figures 1 and 2).

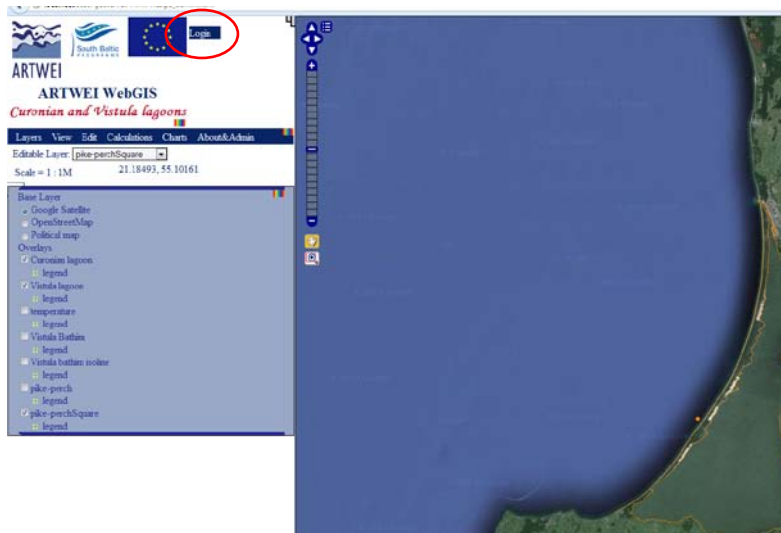


Figure 1

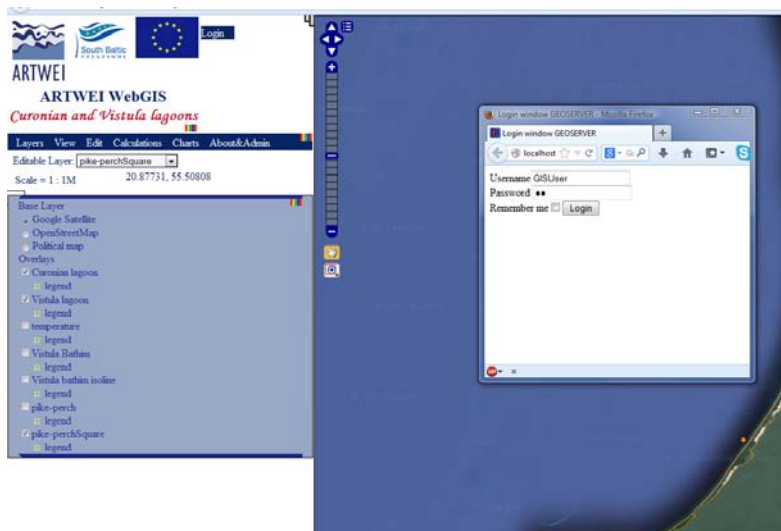


Figure 2

If the user already has its own unique login and password, they can be entered and the system will provide the possibility to download data to the workspace accessible to the user only or shared workspace.

Upon entering unique login and password, the system will provide list of layers and possible data (see below).

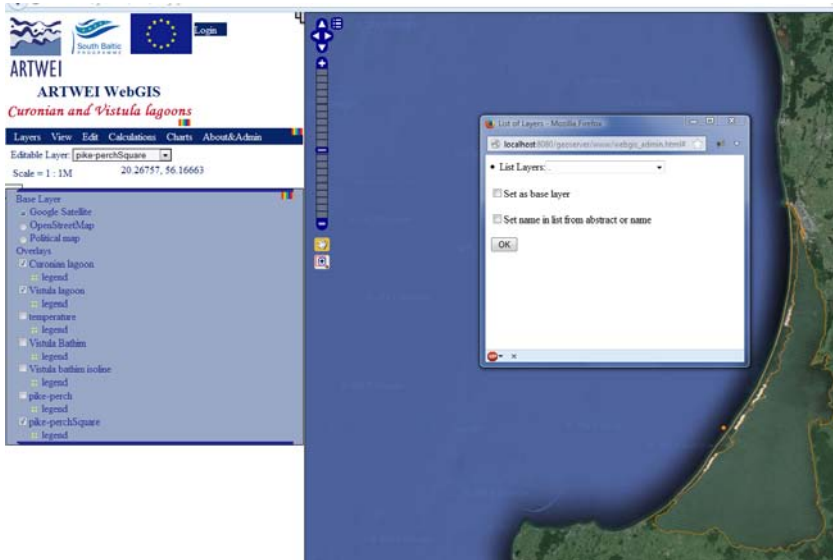


Figure 3 - Window to add layers to the map without registration.

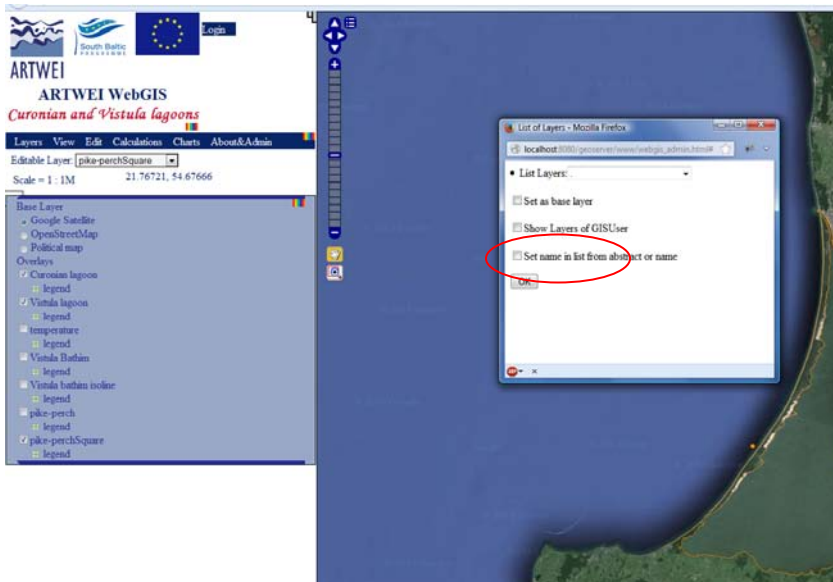


Figure 4 - Window to add layers after registration. New option appears to show the user only the layers of his workspace.

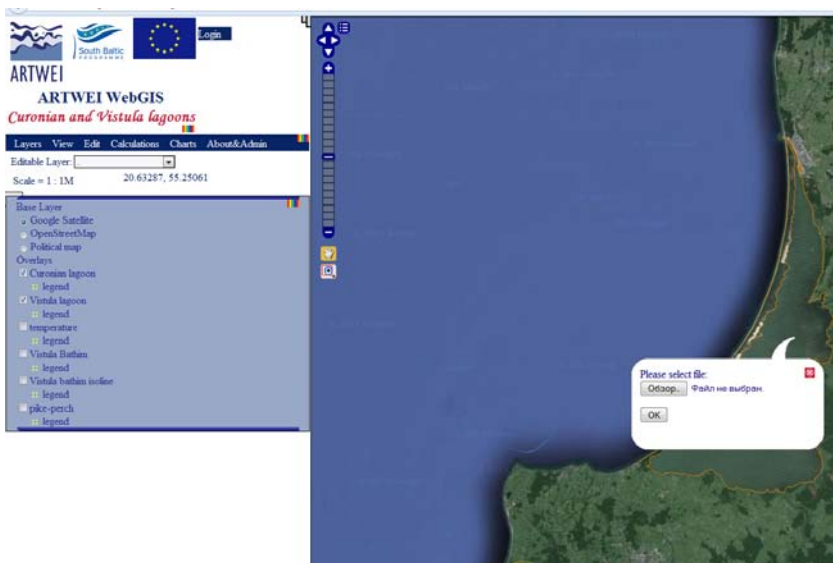


Figure 5 - Window to download shapefile to server without registration

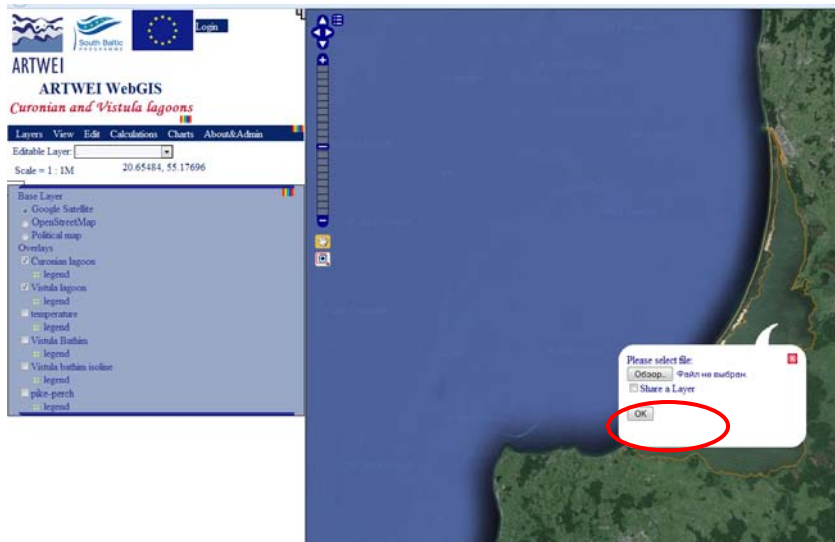


Figure 6 - Window to download shapefile to server after registration. New option “Share a Layer”; if the user checks this box, after uploading its data to the server, it will be available to everyone; if the user does not check this option, the provided data will be available only to him.

Unique user login and password should be registered in the system at first by the website administrator (enter them into Geoserver security system). Please send your unique login and password to [art@corpi.ku.lt](mailto:art@corpi.ku.lt) to be registered.